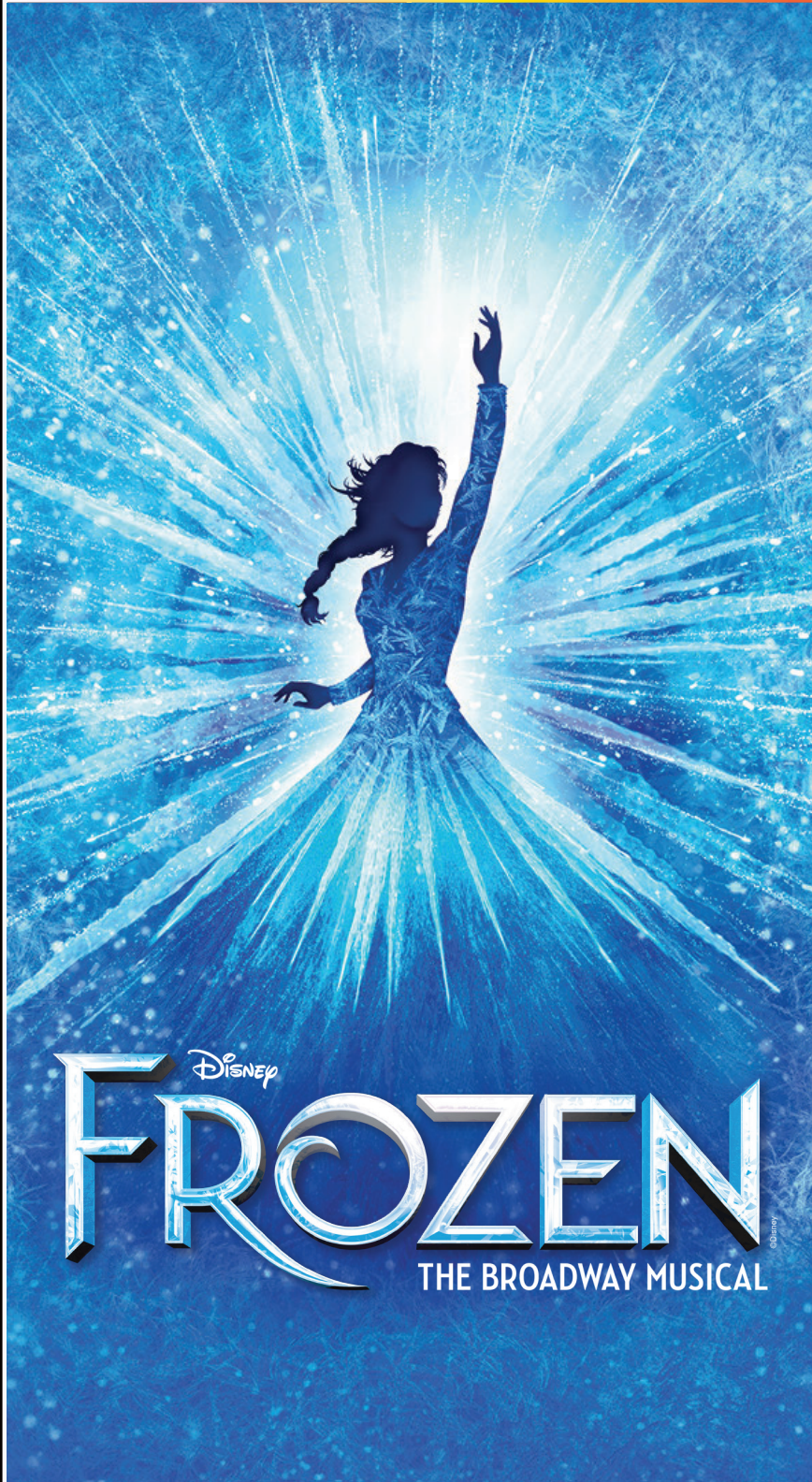




BROADWAY
AT MUSIC CIRCUS

2026

SEASON PERFORMANCE GUIDE



Disney
FROZEN
THE BROADWAY MUSICAL



CREDITS

MUSIC AND LYRICS BY
**KRISTEN ANDERSON-LOPEZ
& ROBERT LOPEZ**

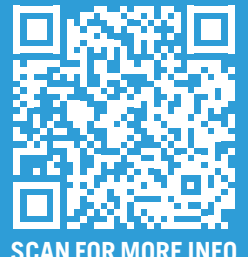
BOOK BY
JENNIFER LEE

ORIGINALLY DIRECTED BY
MICHAEL GRANDAGE

DIRECTOR
GLENN CASALE

CHOREOGRAPHER
ROBBIE ROBY

MUSIC DIRECTOR
MAT EISENSTEIN



SCAN FOR MORE INFO

STORY

Young Princesses Elsa and Anna spend their days in Arendelle Castle separate and alone because of Elsa's inability to control her magical ice powers. When the time comes for Elsa to be crowned queen, the castle reopens and the kingdom is filled with guests, including the handsome Prince Hans and the preening Duke of Weselton. After the coronation, Elsa's powers flare and cover Arendelle in an unexpected winter. Elsa flees into the mountains and Anna enlists ice harvester Kristoff and his trusty reindeer, Sven, to help her find her sister. On their journey, they encounter Olaf, an energetic snowman brought to life by Elsa's magic.

Anna and her group eventually find Elsa in an ice palace at the top of the mountain and are unable to convince her to return to her kingdom. Meanwhile, the people of Arendelle have grown fearful and led by Prince Hans, decide to hunt for Elsa on their own. With an angry mob closing in, it will take an act of true love to melt the ice surrounding Arendelle and bring warmth back into the hearts of all who live in the kingdom.

CHARACTERS

ELSA: An isolated, fearful young woman with magical powers who is the future queen of Arendelle.

ANNA: An energetic, optimistic young princess who longs for connection.

PRINCE HANS: The charming, crafty Prince of the Southern Isles.

KRISTOFF: An ice harvester with a stubborn, cynical exterior that hides his big heart.

SVEN: Kristoff's loyal reindeer companion.

OLAF: A naïve, goofy snowman.

PABBIE: The wise patriarch of the Hidden Folk and adoptive father to Kristoff.

BULDA: The mystical matriarch of the Hidden folk and adoptive mother to Kristoff.

DUKE OF WESELTON: A pompous leader from a neighboring kingdom.

OAKEN: An ultra-cheery salesperson who loves everything comfy and cozy.

THE HISTORY OF DISNEY'S FROZEN

1844 Author Hans Christian Andersen publishes “The Snow Queen,” a fairytale about two young friends named Kai and Gerda and their adventures in a magical land with evil trolls and an enchanting Snow Queen.



“The Snow Queen” illustration by Elena Ringo, 1998

1937 Walt Disney Productions releases “Snow White and the Seven Dwarfs,” an animated musical fairytale and the first-ever feature-length animated film.



Early Disney Snow Queen art by Marc Davis, 1940

1940 Producers Walt Disney and Samuel Goldwyn begin developing a film about Hans Christian Anderson that would include animated sequences depicting many of his fairytales, including “The Snow Queen.” The project halts in 1942 while Disney focuses on creating U.S. military films during World War II.



“Anna and the Snow Queen” by Claire Keane, 2008

1989 Walt Disney Studios releases “The Little Mermaid,” their first animated fairytale in 30 years. The film’s success leads to renewed interest in film adaptations of fairytales.

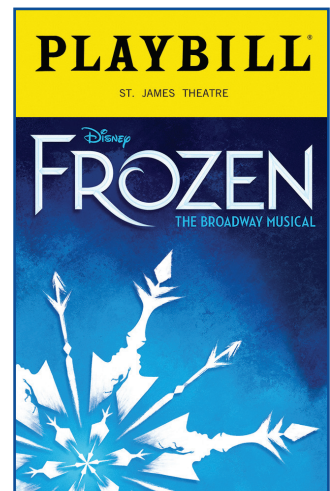
2008 Director Chris Buck begins developing “Anna and the Snow Queen,” a hand-drawn animated film based on “The Snow Queen.” As the project evolves, it becomes a 3-D animated film with a story about two sisters and the film is retitled “Frozen.”



“Frozen” movie poster, 2013

2013 “Frozen,” a 3-D animated musical fairy tale film from Walt Disney Studios, is released on November 27. The film’s catchy songs and heartwarming story about sisterhood take over the world! Disney quickly begins working on a stage adaptation of the film.

2016 An hour-long adaptation of **FROZEN** opens on stage at Disney’s California Adventure Theme Park in California.



FROZEN Broadway Playbill, 2017

2018 After a trial run in Denver in the fall of 2017, the musical adaptation of **FROZEN** opens on Broadway at the St. James Theatre. The musical adds deeper relationships between the main characters and more than 15 new songs. The Broadway production runs for two years and is followed by a National Tour and new productions across Europe and Asia.

2026 **FROZEN** plays at Broadway At Music Circus for the first time in forever!

ARENDELLE IN REAL LIFE

The kingdom of Arendelle in **FROZEN** is a fantastical land, but it is greatly influenced by Nordic countries such as Norway, Sweden, Iceland and Denmark. Check out some places and things that inspired parts of the story and where they come from!



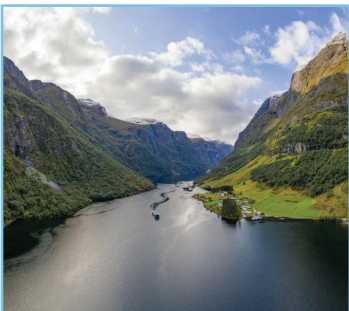
The magical Hidden Folk of **FROZEN** onstage were adapted from the trolls in the animated film, but they also draw inspiration from the Icelandic mythology of the **huldúfolk**, elf-like people who live hidden among the rocks and help humans.



The **Samí** are an indigenous people group who are the native residents of parts of Norway, Sweden and Finland. **Joiking**, a traditional Samí musical style centered around chants, can be heard in some of the songs sung in Arendelle.



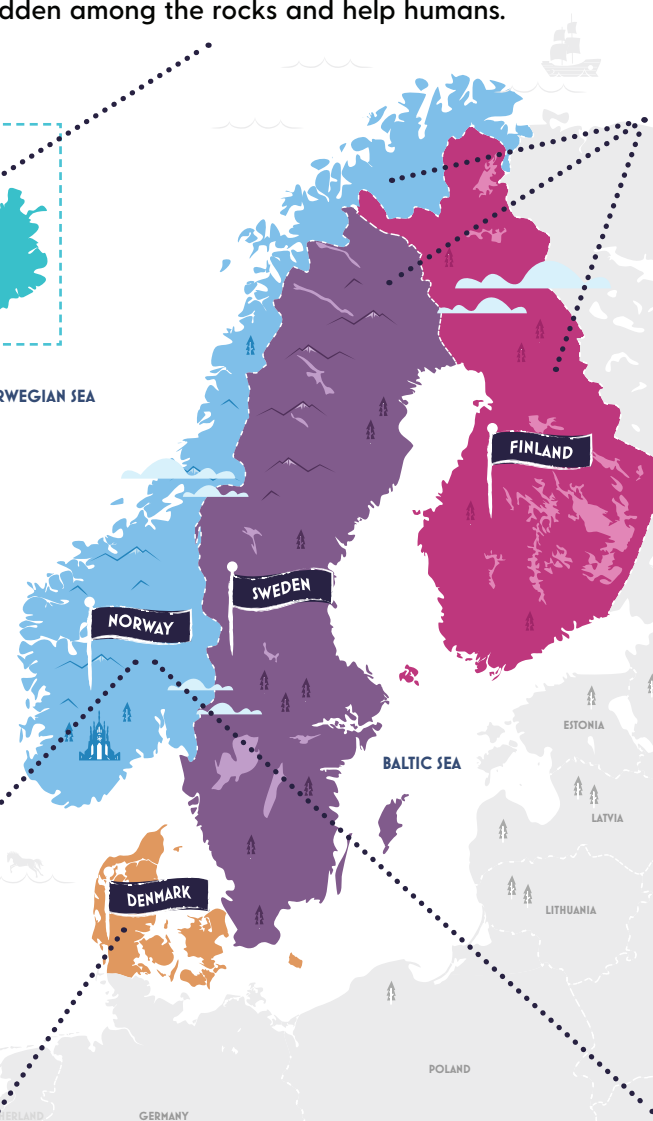
NORWEGIAN SEA



Nærøfjord is an inlet of the sea in western Norway that is surrounded by a long, narrow valley with tall cliffs. This inspired Arendelle's seaside location and steep, snowy mountains.



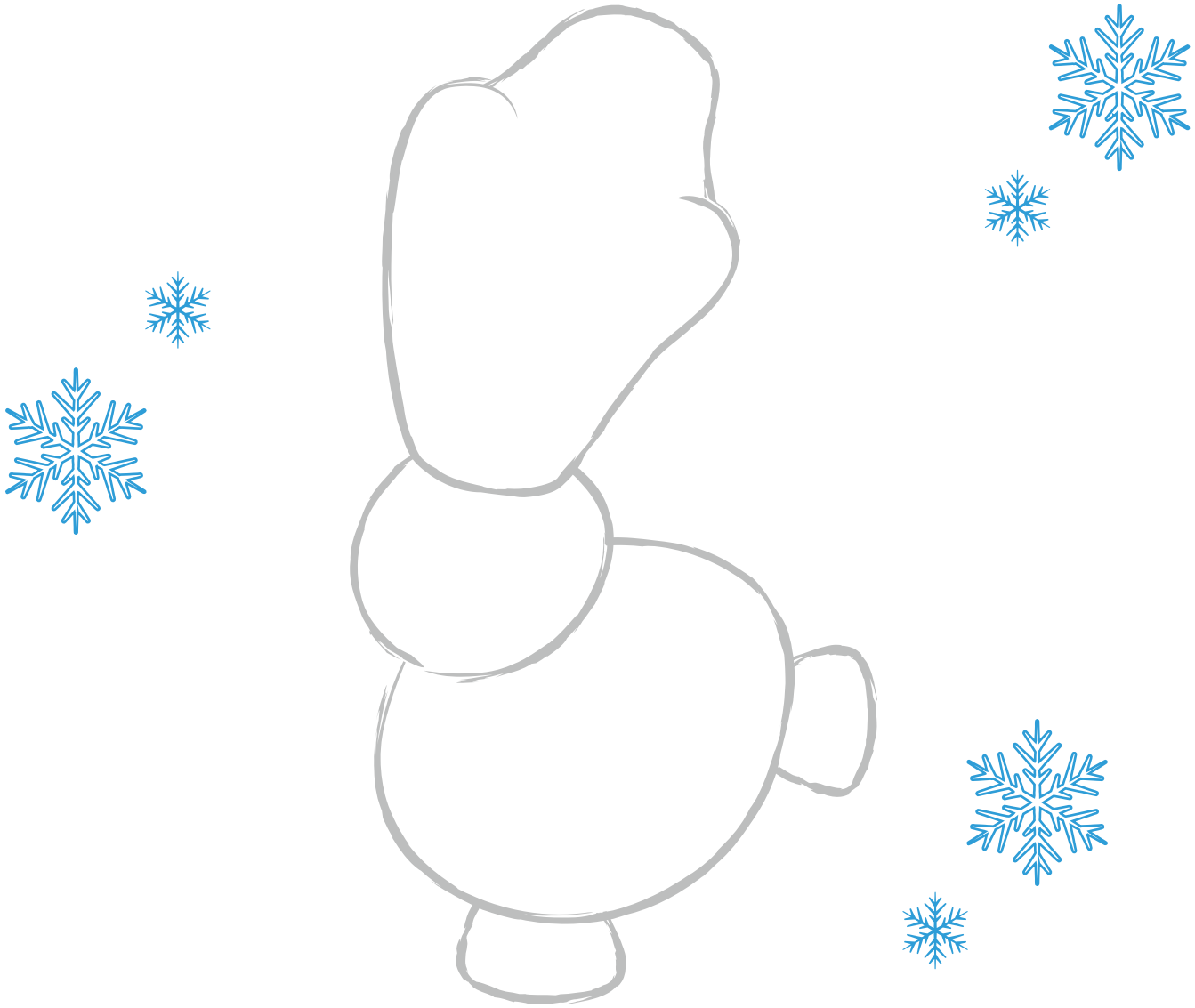
Oaken and his family sing about **hygge**, a Danish word that represents taking time to relax and enjoy quiet, cozy things like candles, blankets and warm beverages. This idea encourages Danish people to spend time together and care for each other during the cold, dark winter months.



Rosemaling is a traditional Norwegian style of decorative painting involving intricate floral patterns that became popular in the 1700s. In Arendelle, you might notice it in the scenery or even some of the clothing!

DO YOU WANNA BUILD A SNOWMAN?

DRAW A SMILING FACE AND A FANCY OUTFIT FOR YOUR VERY OWN FROSTY FRIEND!



THINK ABOUT IT

- ▶ **FROZEN** is an adaptation of an animated film, which is in turn loosely based on the fairytale “The Snow Queen.” Try reading the original story and/or watching the movie. What similarities do you notice between the versions? What changes stood out most? Why do you think those changes were made?
- ▶ Elsa begins to gain control over her powers once she lets go of her fear. Think of a time when you had to overcome a fear. What helped you get past it? How did it feel to no longer be afraid?
- ▶ Anna and Elsa are very different, but still love each other very much. Think about the differences between you and the people you care about. How do those differences make your relationships special?
 - ▶ How do these sisters model a different kind of true love from what is usually seen in fairytales?

THANK YOU FOR JOINING US!



UC DAVIS HEALTH PAVILION

SPECIAL THANKS TO



This guide was developed by Mason Diab, Caleb Larrosa-Colombo and Jackie Vanderbeck.
Special thanks to Griff Field, Matt Hessburg, Scott Klier, Dejan Zivkovic and YOU,
audience members, for joining us at **Broadway At Music Circus!**